

MF Cardamone's *New American Botanicals*

Presented by Dr. Matthew McLendon

A presentation by Dr. Matthew McLendon about the artist MF Cardamone as botanist. Cardamone's exhibit, New American Botanicals, is inspired by the unique plants and cultural traditions found at Selby Gardens and within the state of Florida.

Dr. Matthew McLendon, is Curator of Modern and Contemporary Art at The John and Mable Ringling Museum of Art in Sarasota, Florida under the aegis of Florida State University. While at The Ringling he has overseen the permanent installation of Joseph's Coat, the Skyspace by renowned artist James Turrell. He has also curated numerous exhibitions including Re:Purposed, R. Luke DuBois—Now, Sanford Biggers: Codex, Zimoun: Sculpting Sound, and Beyond Bling: Voices of Hip-Hop in Art, among others. Dr McLendon is on faculty at Florida State University where he teaches graduate seminars in contemporary art and museum practice and is adjunct faculty at New College of Florida, the State Honors College. He received his MA and PhD from the Courtauld Institute of Art, University of London. While completing his doctoral work, he served as Interim Curator of Adult Learning at Tate Britain.

The Artist As Botanist: Somewhat Random Musings on Plants and the Garden in Art

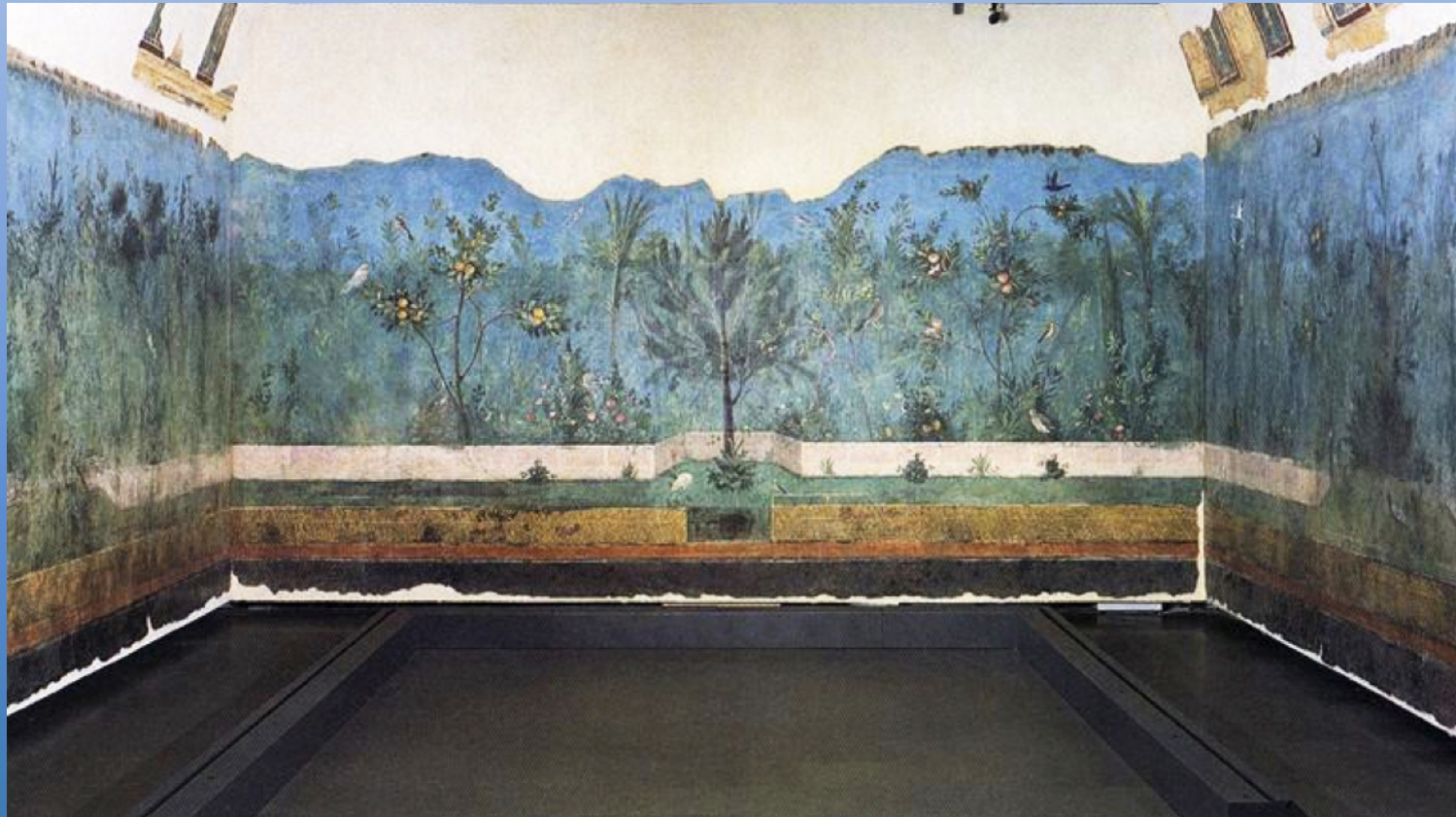
Matthew McLendon, PhD
Curator of Modern and Contemporary Art
The John and Mable Ringling Museum of Art



Florida Tree of Life, mixed media on
paper, 43 x 30 in



Fragments from the Tomb of Nebamun, ca. 1350 BCE, British Museum
The right scene depicts, date palms, sycamores, and mandrakes



The Garden Fresco from the Villa of Livia, ca. 30 – 20 BCE
Museo Nazionale Romano, Rome Italy
Second Style Roman Wall Painting



Image of blackberry from the 6th Century *Vienna Dioscurides*, a copy of the five-volume *De Materia medica*, written by the Greek physician Dioscorides between 50-70 AD



Creation of Eve and Eve and the Virgin, *Hours of Catherine of Cleves*, Illuminated by the Master of Catherine of Cleves, Utrecht, The Netherlands, ca. 1440

Tempera on vellum, 7 1/2 x 5 1/8 in. The Morgan Library

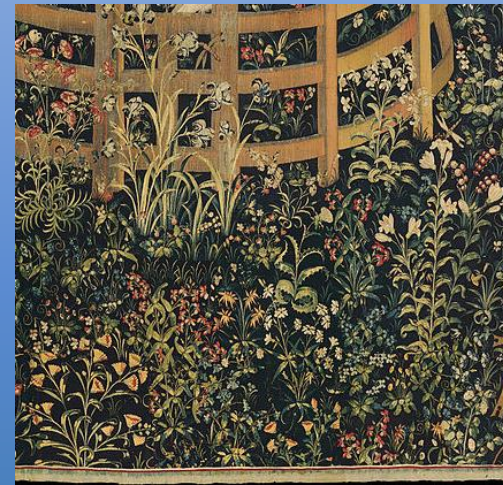
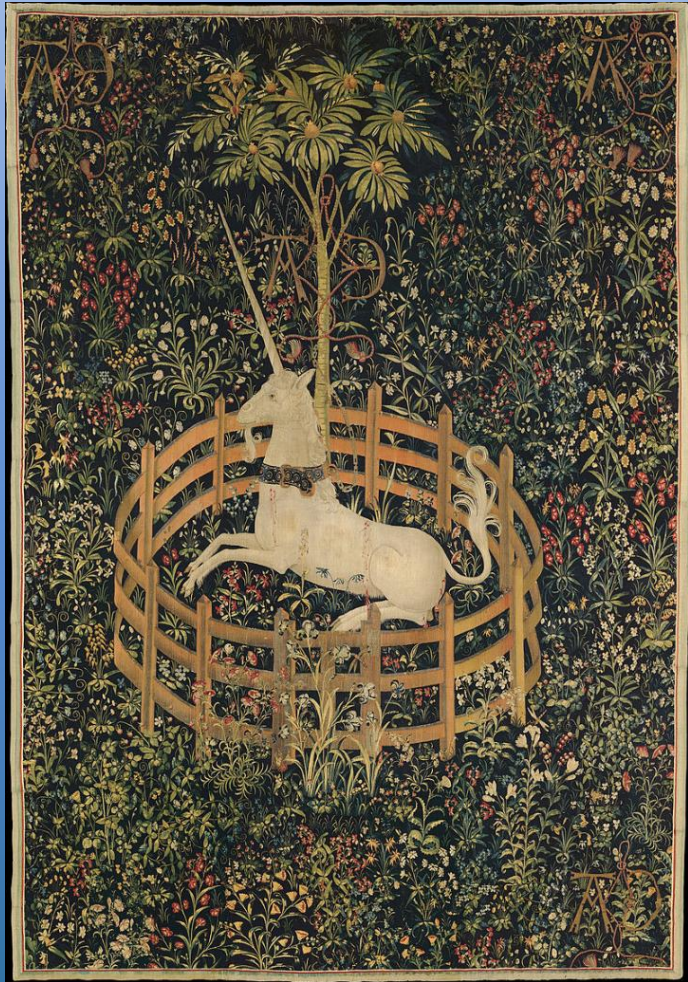
Hortus conclusus



Fra Angelico, *The Annunciation*, fresco
1430-32, Convent of San Marco,
Florence



Martin Schongauer, *Madonna in
Rose Garden*, ca. 1473, tempera on
panel, Church of St. Martin, Colmar,
78 x 45 in.



The Unicorn in Captivity, 1495-1505
 wool warp , wool, silk, silver, gilt wefts,
 South Netherlandish, The Metropolitan Museum



Nicolas Robert, Flower Study, 17th century, watercolor on vellum, 12 x 8 in. The Fitzwilliam Museum



Jean-Baptiste Monnoyer, *Flowers in a Vase*, 17th century, 11x9 in. etching



Maria Sibylla Merian, *Metamorphosis insectorum Surinamensium*, Plate XX. (*Thysania agrippina*), 1705, engraving, 20 x 13 in.



Roubillac, *Bouquet of Rose, Anemone, Oeillet, Tulipe, Jonquille*, from Cahier 2 of "Etudes de Fleurs d'Apres Nature", Paris, n.d. , ca. 1780–1800, engraving,

16 x 8 in.



Sèvres Manufactory, pair of ice-cream coolers from service des plantes de la Malmaison, 1803–04, MFA Boston



Claude Monet, *The Japanese Footbridge*, 1899, oil on canvas,
The Philadelphia Museum of Art



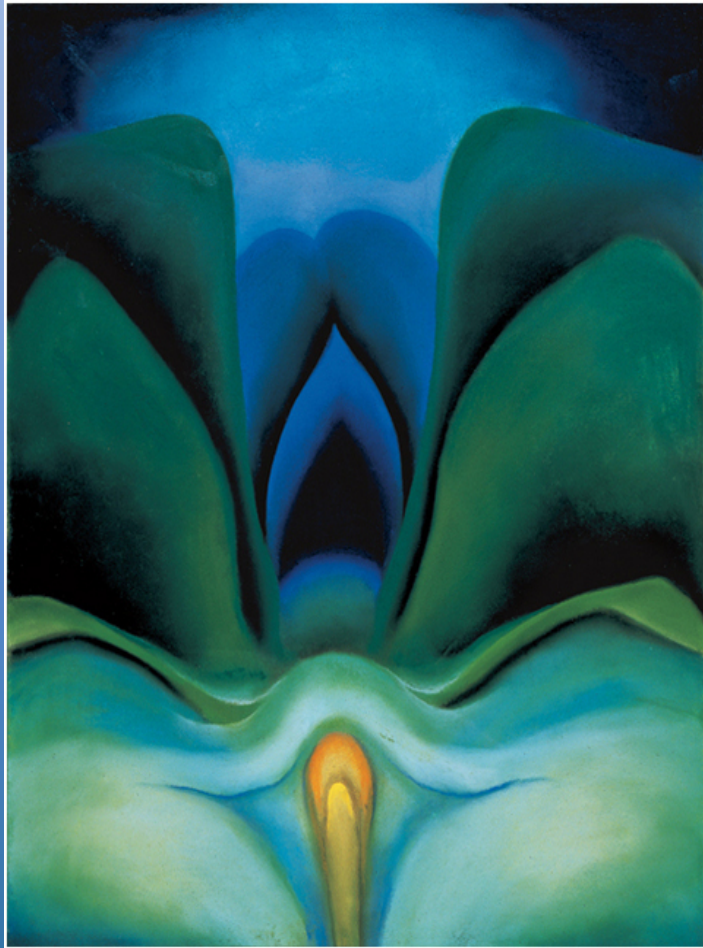
Henri Rousseau, *The Dream*, 1910, oil on canvas, 80 x 117 in.
The Museum of Modern Art



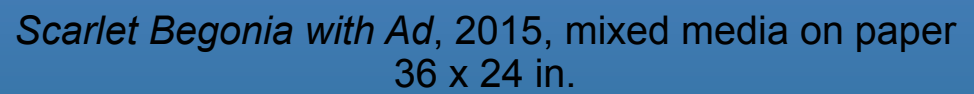
Hannah Höch , *Cut with the Dada Kitchen Knife through the Last Weimar Beer-Belly Cultural Epoch in Germany*, 1919, Collage, 44 x 35 in.
Nationalgalerie, Staatliche Museen zu Berlin



Dorothea Tanning, *Sunflower Landscape*, 1943, oil on canvas, 14 x 11 in.



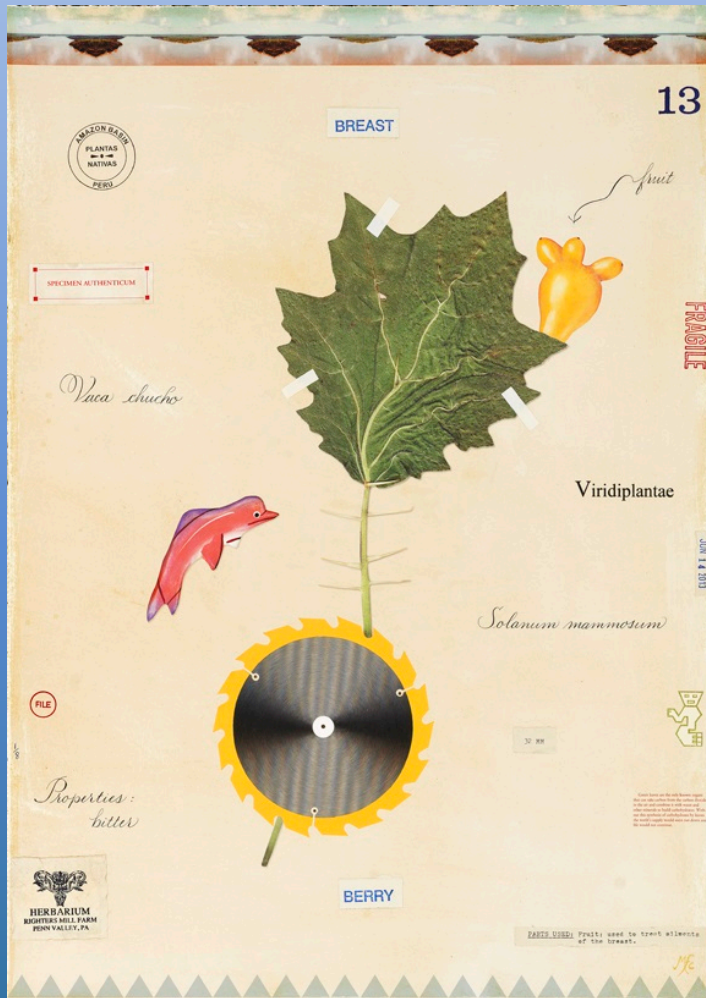
Georgia O'Keeffe, *Blue Flower*, 1918. Pastel
on paper mounted on cardboard, 20 × 16 in.
Private Collection



Scarlet Begonia with Ad, 2015, mixed media on paper
36 x 24 in.



Butterfly Orchid with Snow White, 2015, mixed media on paper, 22 x 15 in.



Breastberry with Sawblade, 2015, mixed media on paper
24 x 17 in.



Roxy Paine, *Crop*, 1997-98, mixed media, 108 x 84 x 70 in.

De Pont Museum, Netherlands



L.C. Armstrong, *Rainbow over DUMBO*, 2008, acrylic, bomb fuse, and resin on linen on birch panel

Triptych, 48 x 144 in., each panel 48x48 in



Will Ryman, *The Roses*, 2011,
Park Avenue, New York



Will Ryman, *A New Beginning*, 2009
Marlborough Gallery, Chelsea

Thank You